

High Throughput UDP/XMPP based Router

Applications and *When* to Set it Up



JINGLE



XMPP



Jingle Nodes

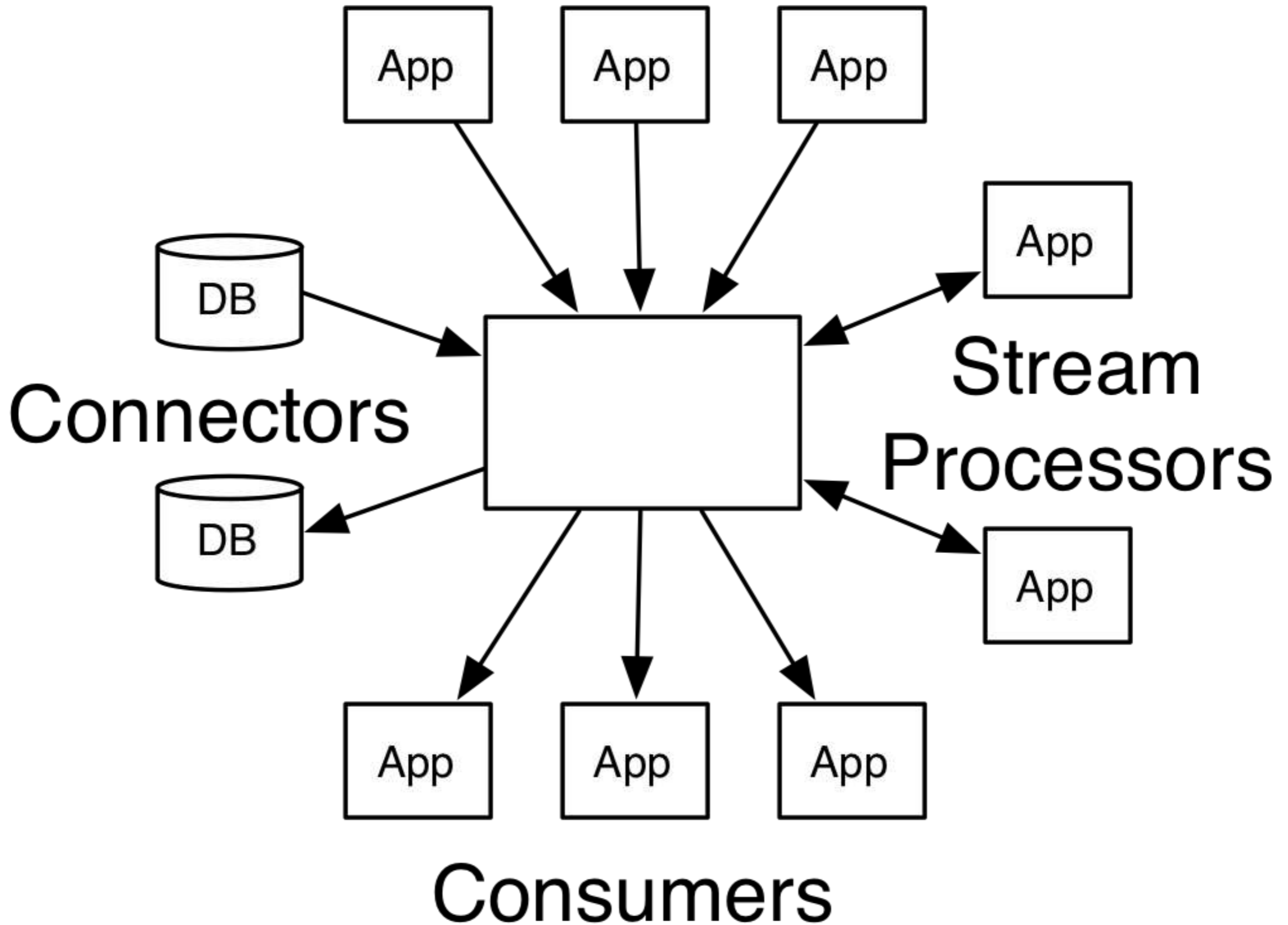


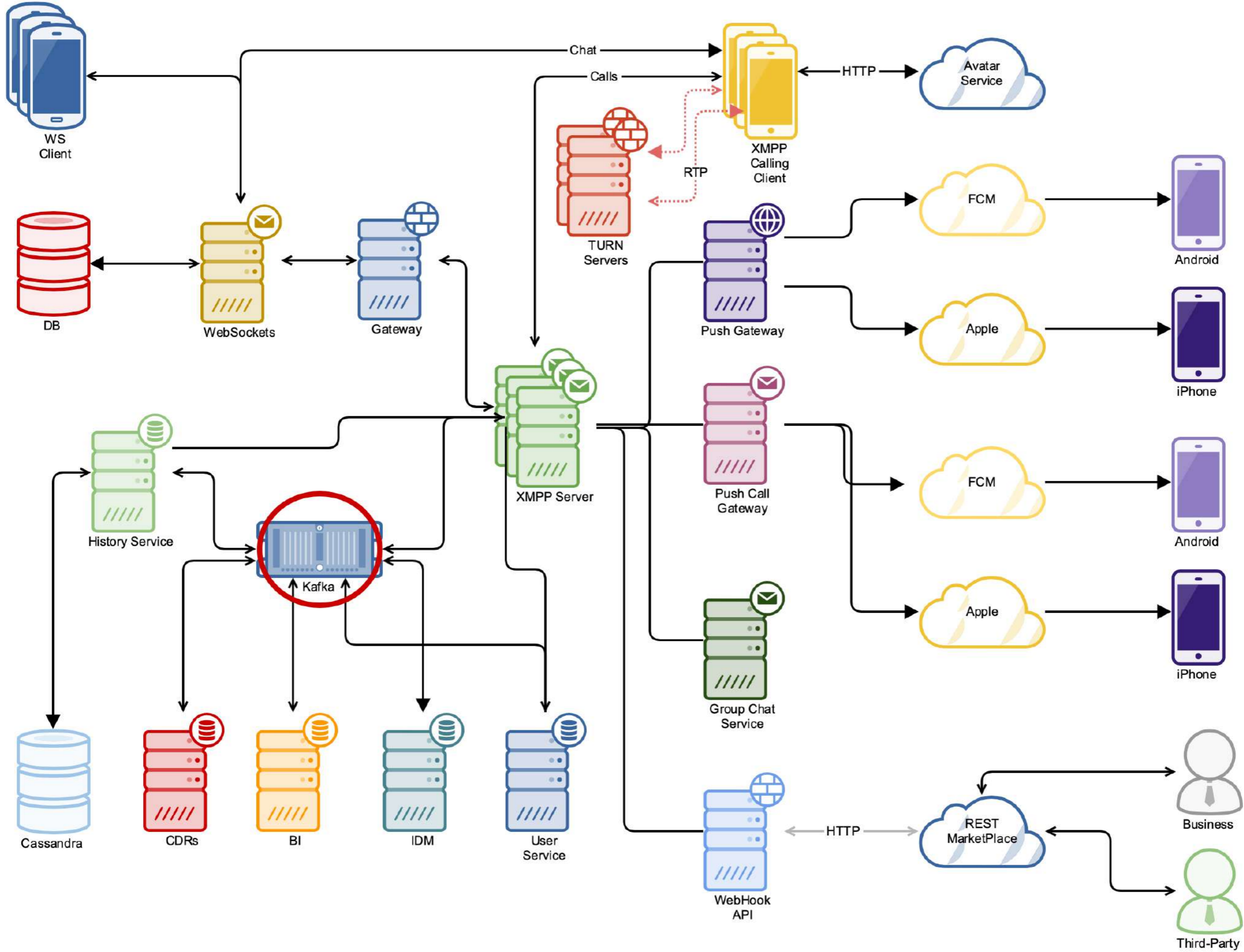
A GLOBAL INITIATIVE



WebRTC

Producers





Standard Event Buses

- ✦ Apache Kafka
- ✦ RabbitMQ
- ✦ ZeroMQ



Kafka

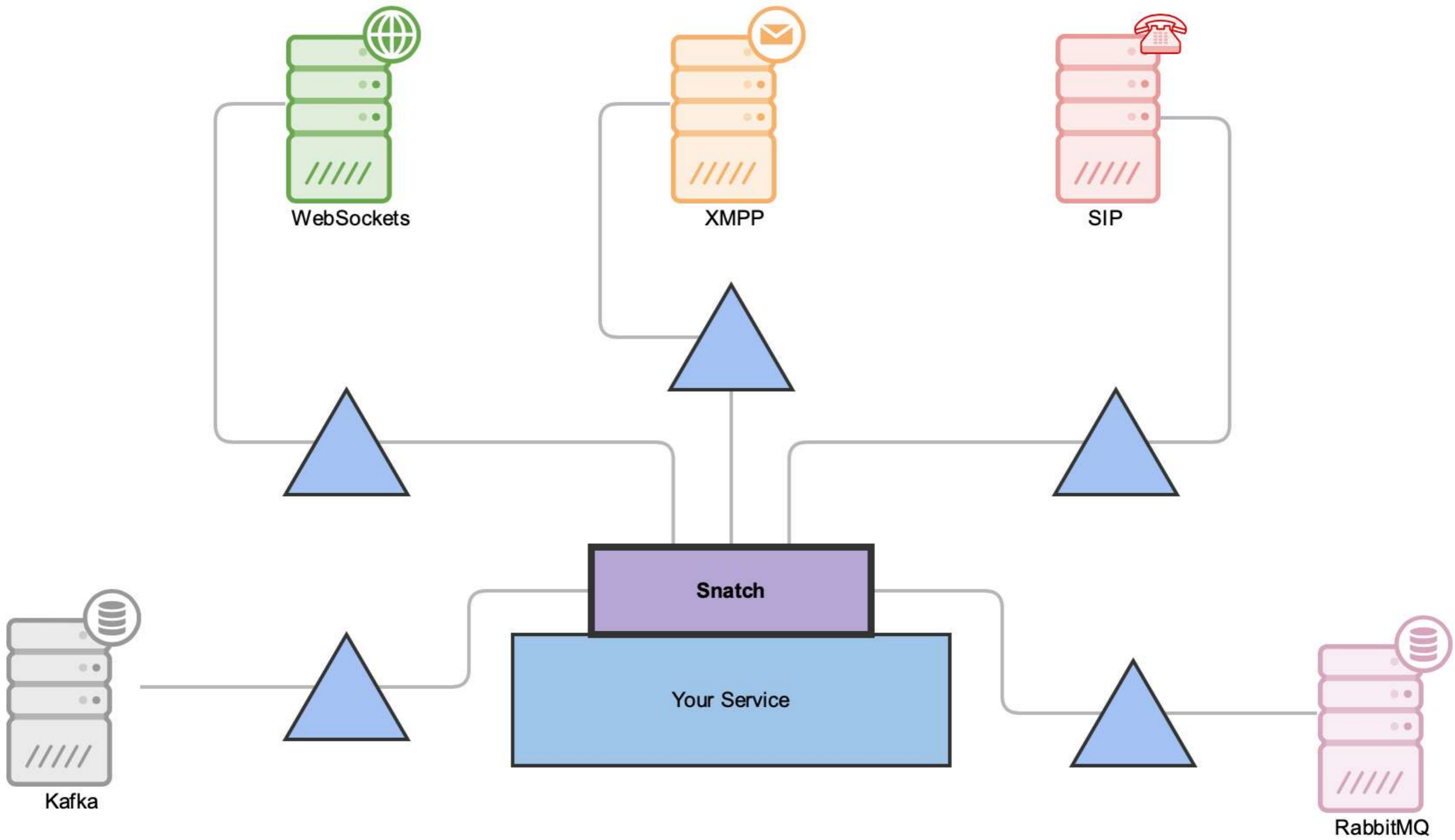
- ✦ Persistence never used
- ✦ Painful LB Resize
- ✦ Congestion Problems
- ✦ Multi DC was impractical
- ✦ Event Timestamp Check



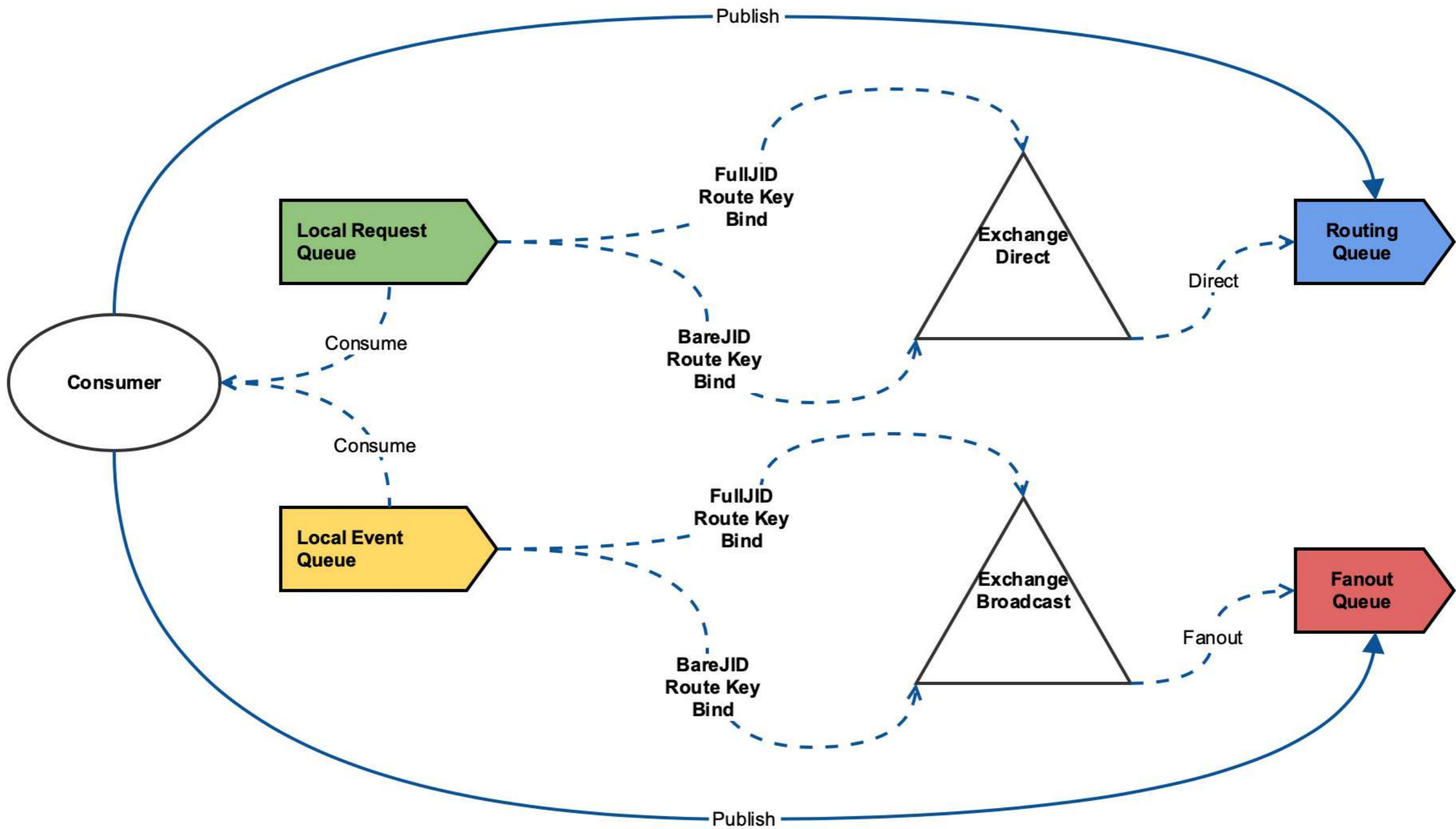
About Snatch

- ✦ A Protocol Hub
- ✦ Lightweight
- ✦ Unifies Transport Layers
- ✦ Interchangeable Layer
- ✦ Extensible





Path to Glory!



RabbitMQ

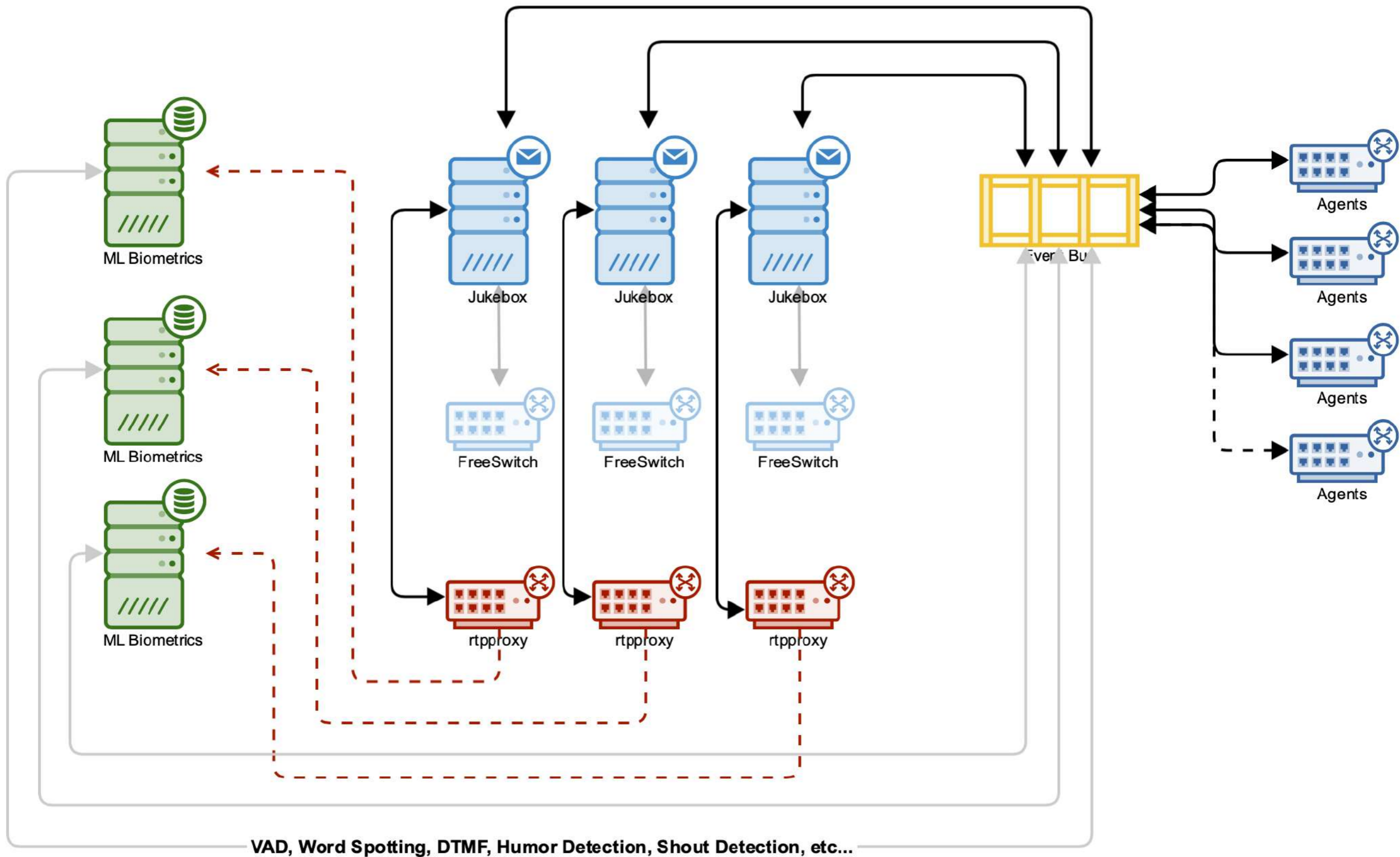
- ✦ Reliability was Great!
- ✦ Federated Queues
- ✦ Filling Queue / Overflow
- ✦ Checking Message Time



XMPP (as a Bus)

- ✦ Fast, Fast, Fast!
- ✦ Federation is a Breeze
- ✦ Flexible Routing Model
- ✦ No Check on Timestamps





When it's about Realtime

- ✦ Extreme Amount of Events
- ✦ Low Latency as Possible
- ✦ Volatile Events
- ✦ Ephemeral Events
- ✦ Usually Reduced Payload

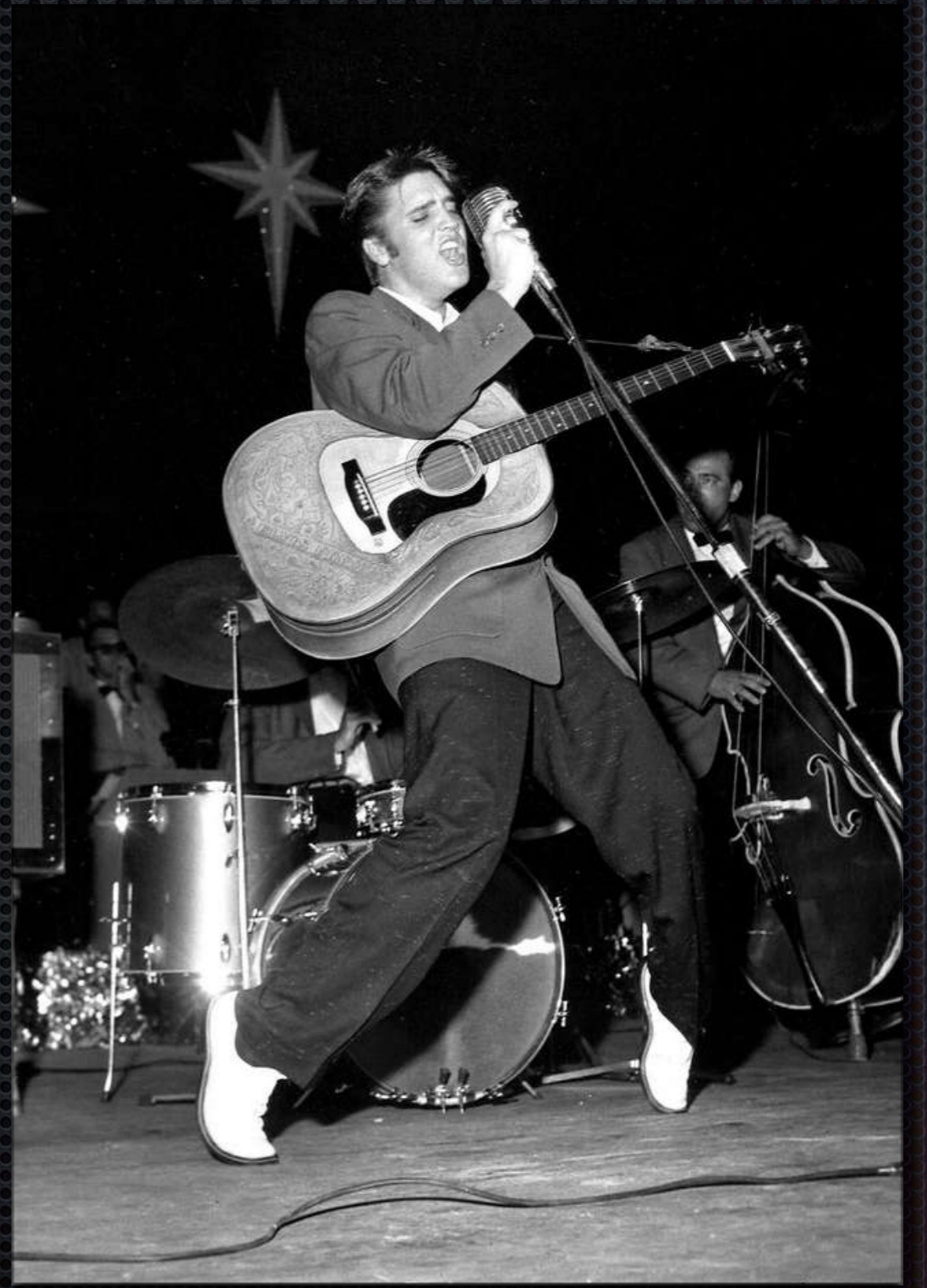






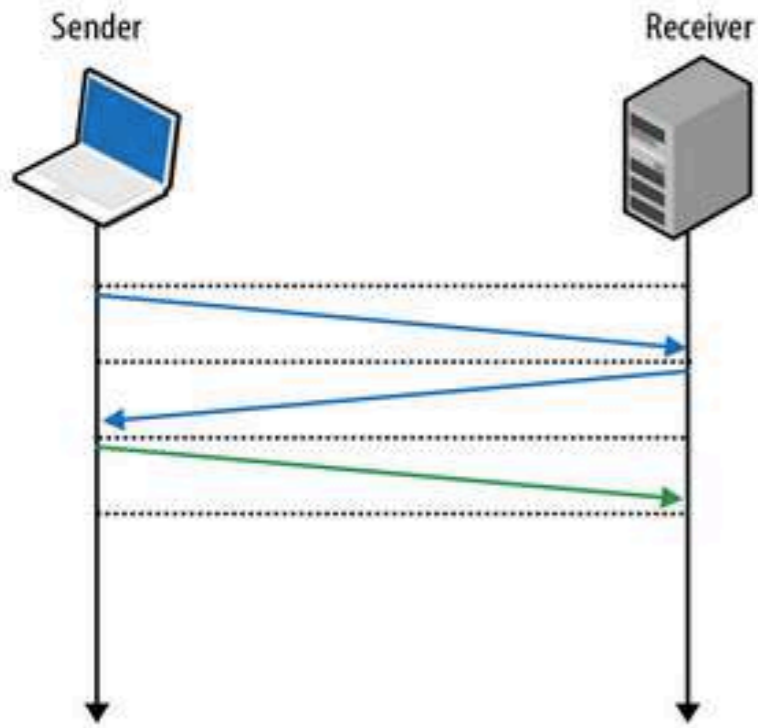
"It's now or
never"

Elvis - The King



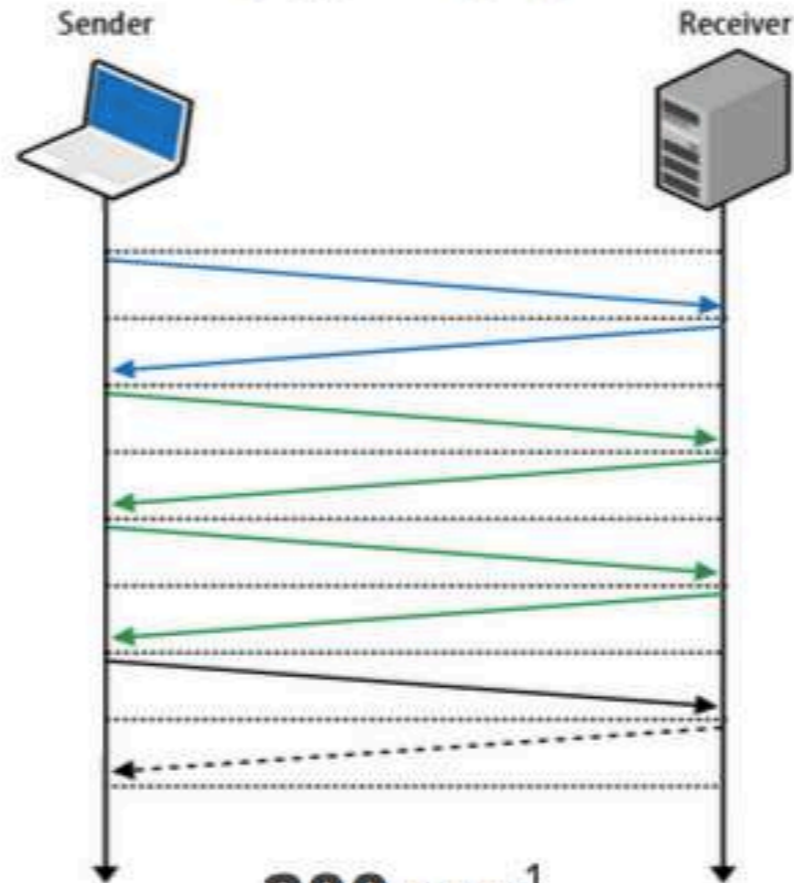
Zero RTT Connection Establishment

TCP



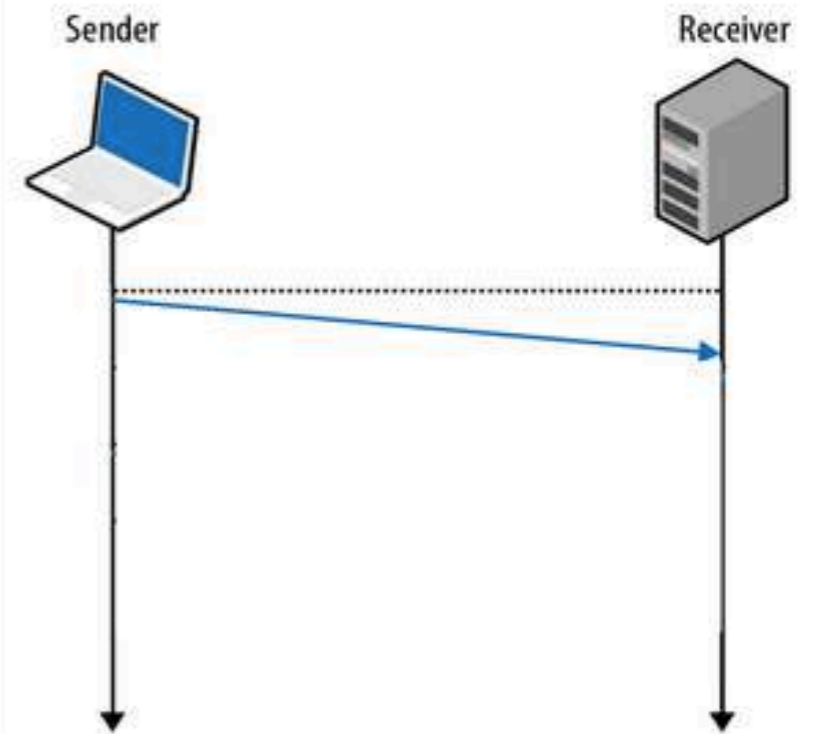
100 ms

TCP + TLS



200 ms¹
300 ms²

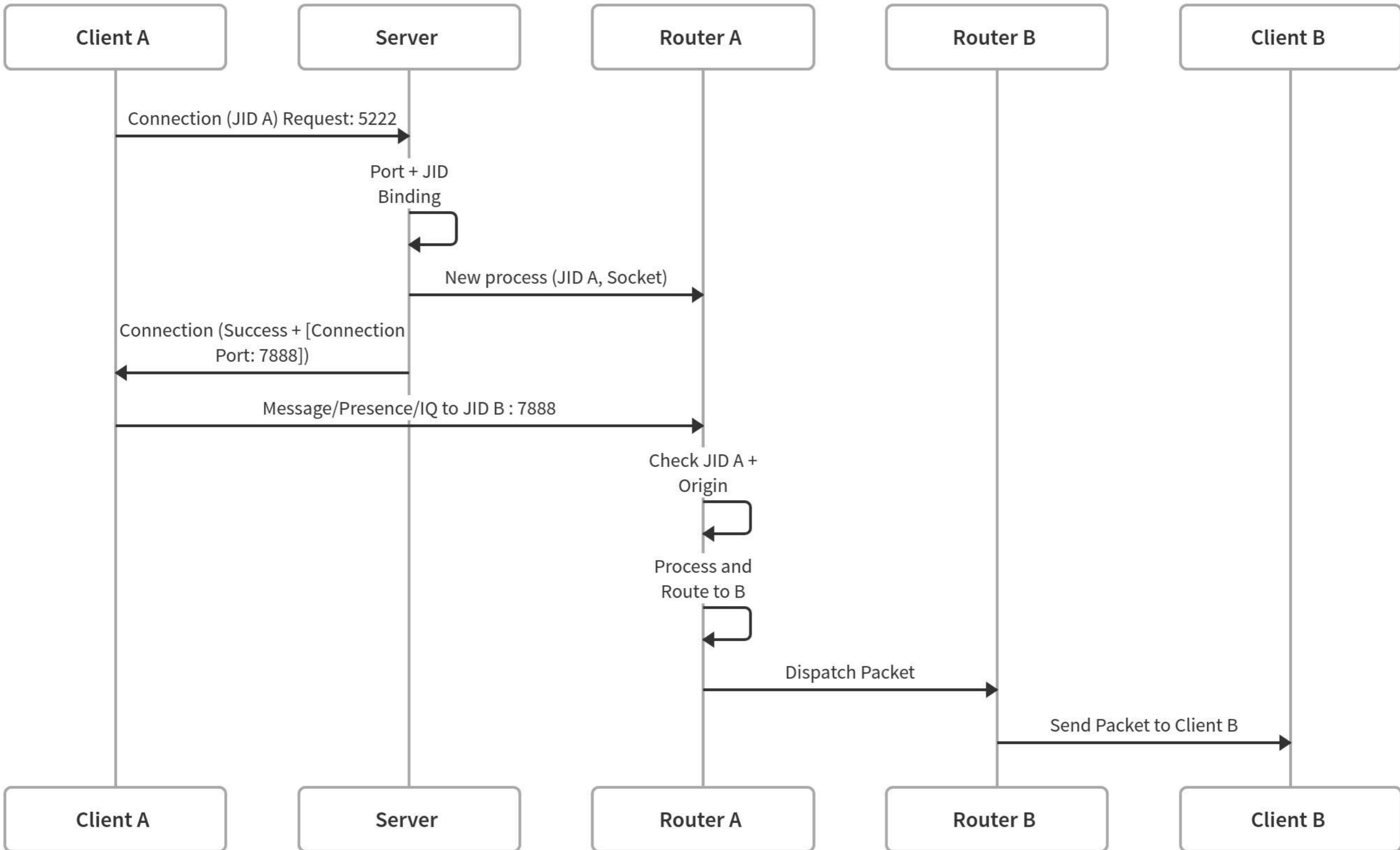
QUIC
(equivalent to TCP + TLS)

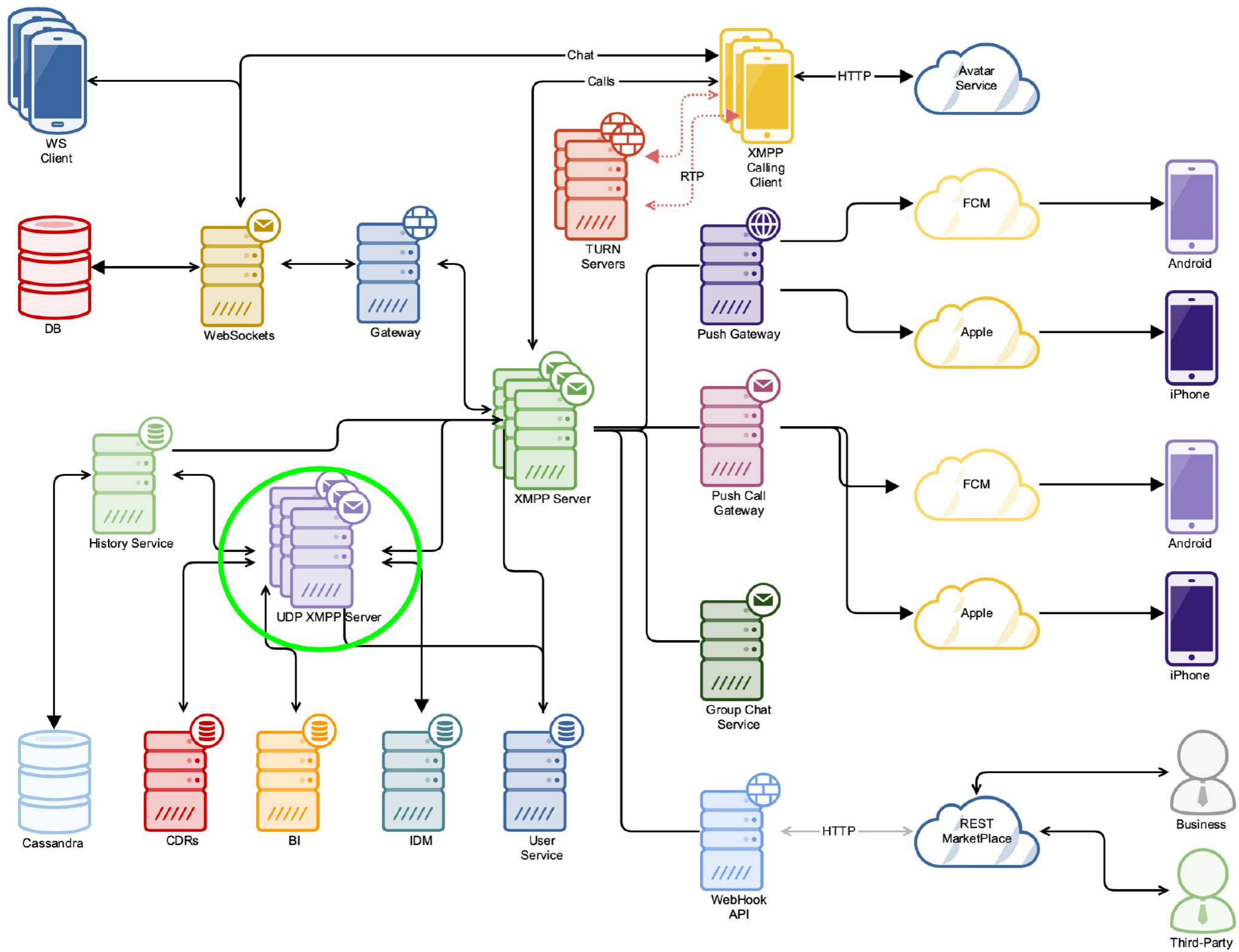


0 ms¹
100 ms²

1. Repeat connection
2. Never talked to server before

Connection and Packet Flow





<https://github.com/xmppjingle/uxmpp>



@xmppjingle

Thiago Rocha Camargo